



Laser Safety

Issue 3: July 2021

EH&S/ ORS: Laser Safety Bulletin

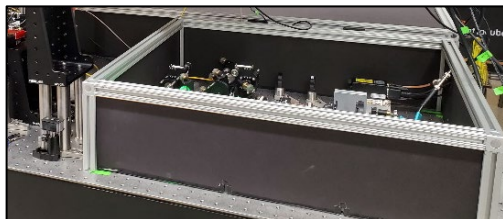
Control Measure Tips

Every research lab is different and unique. Not “one size fits all”. The Laser Safety Program within EH&S can help with finding alternative economical options which still provides the equivalent protection.



Warning Lights

An alternative to the laser warning lights could be bike lights or magnetic flood warning light with proper labels and procedure in place.



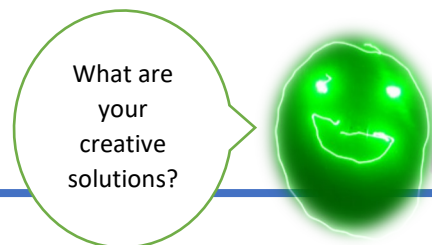
Barrier/Enclosure Materials

Alternative to rated barriers/enclosures for Class 3B or low power Class 4 lasers are good quality acrylic or polycarbonate sheets. They can be effective containment for scatter or direct beams. You can self-test the materials using a laser meter to ensure it provides sufficient protection. These materials can be purchased at various vendors or at UW department machine shops.

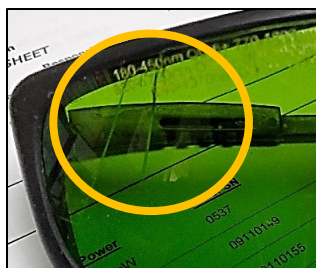


Eyewear Care

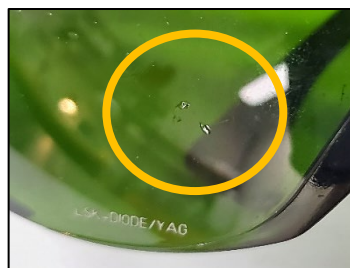
Protect eyewear from scratches or other damages by placing them in their cases within a bin or hanging organizers.



Immediately replace eyewear if ...



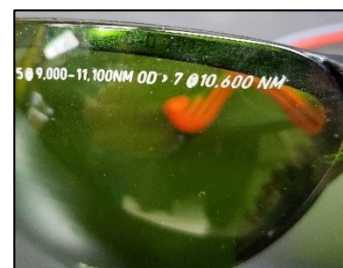
They have scratches and cracks in the lens.



There are damages such as holes and dents.



Uncomfortable or improper fit. Users are less likely to wear them.



The wavelength(s) printed on the glasses don't match the wavelength(s) of the laser in use.

*** EH&S can provide some frames for individuals to try and test the fit of the eyewear before purchase.**



If you have any questions, comments, or concerns please contact EH&S Laser Safety at lasersafety@wisc.edu or call (608) 265-5000