

DISPOSAL OF RADIOACTIVE EQUIPMENT

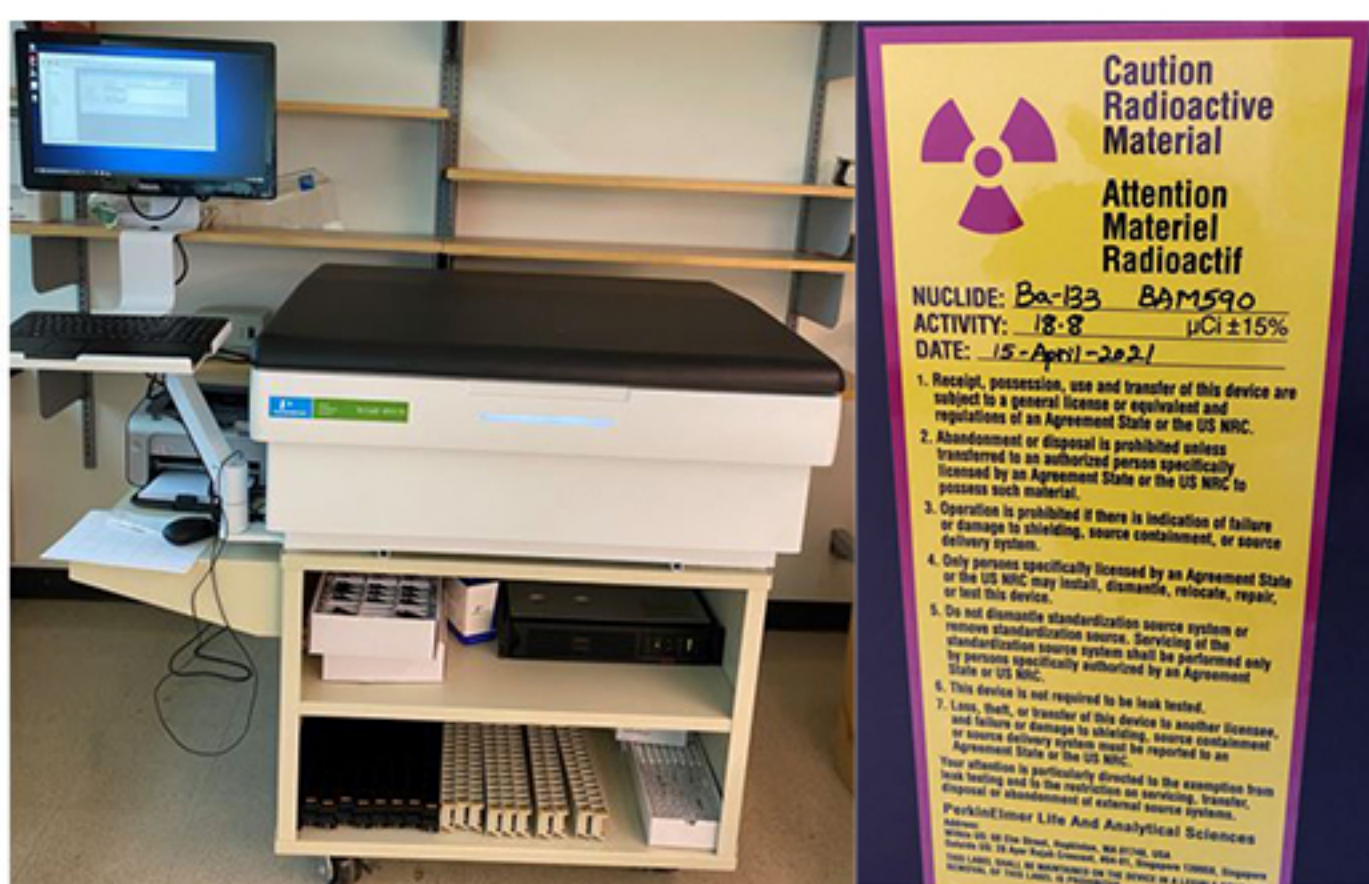
KEY FACTS

Research equipment may contain an internal radioactive source. A label from the manufacturer will indicate its presence. Usually located on back of machine.

Equipment labeled “Caution Radioactive Materials” must never be moved or relocated from a lab space without approval from the Office of Radiation Safety.

COMMON EQUIPMENT TO WATCH FOR

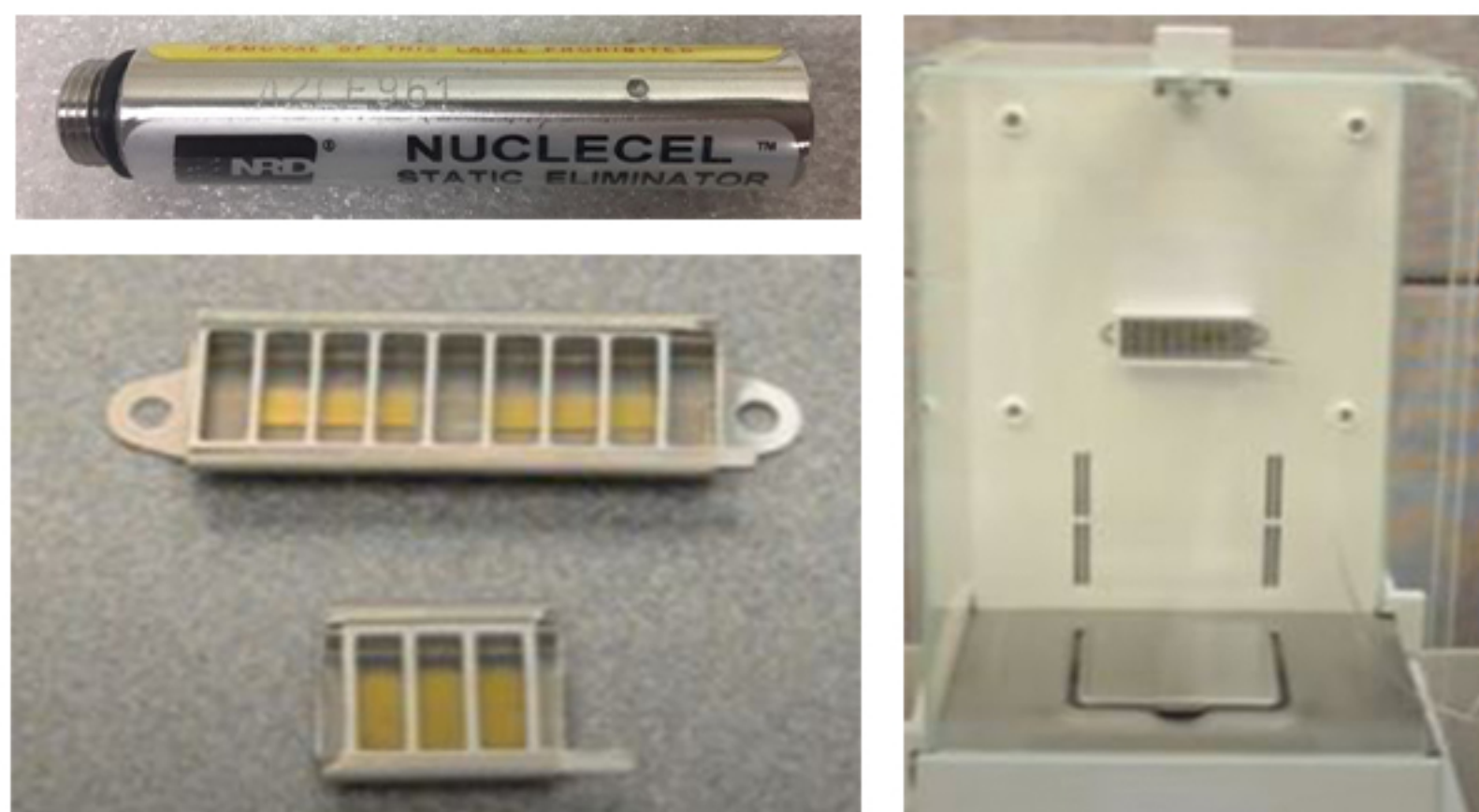
Liquid Scintillation Counters (1) • Gas Chromatographs (2) • Static Eliminators (3)
Mossbauer Spectrophotometer (4) • X-ray Fluorescence Devices • Smoke Detectors • Exit Signs



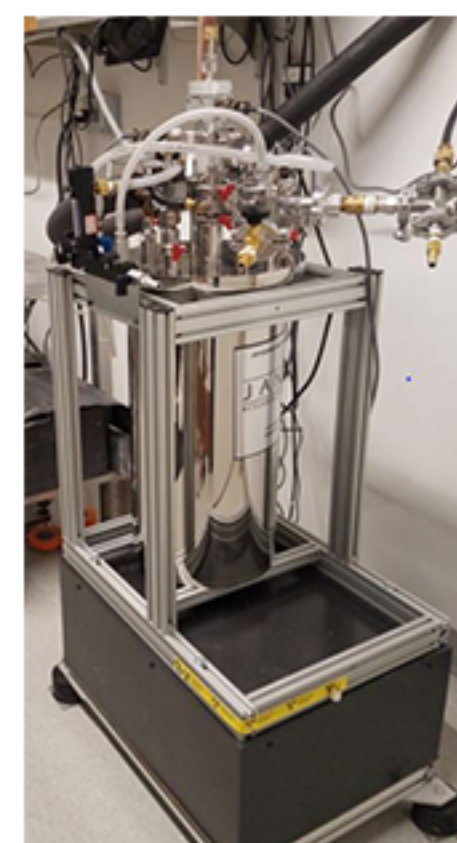
Liquid Scintillation Counter (1)



Gas Chromatograph (2)



Static Eliminators (3)



Mossbauer Spectrophotometer (4)



CAUTION

There are huge variations in size, shape, and design of both equipment and sealed radioactive sources.

Always consult EH&S first if you are asked to take, move, or dispose of anything that displays 'Caution Radioactive Materials' signage. The equipment may be contaminated or contain a sealed source. Do not touch such equipment.

radiationsafety@wisc.edu or 608-265-5000



Environment, Health & Safety
FACILITIES PLANNING & MANAGEMENT
UNIVERSITY OF WISCONSIN-MADISON